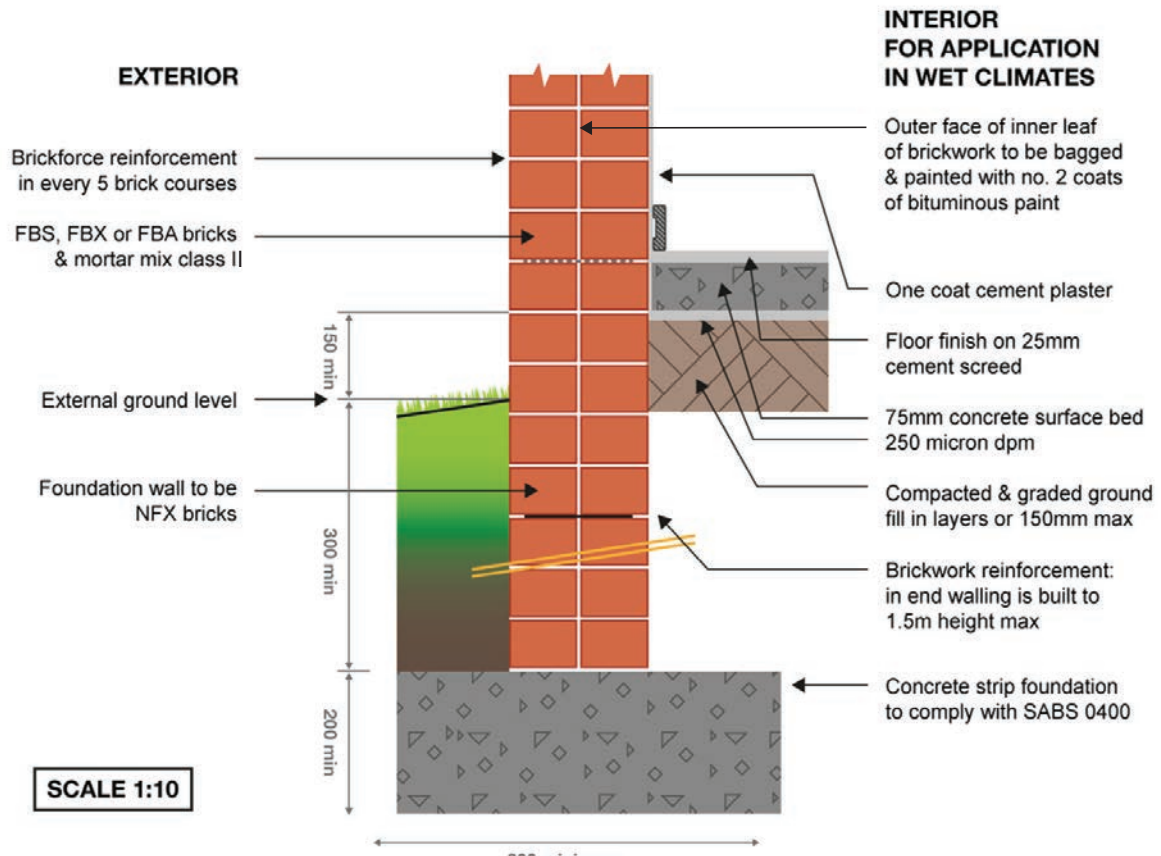


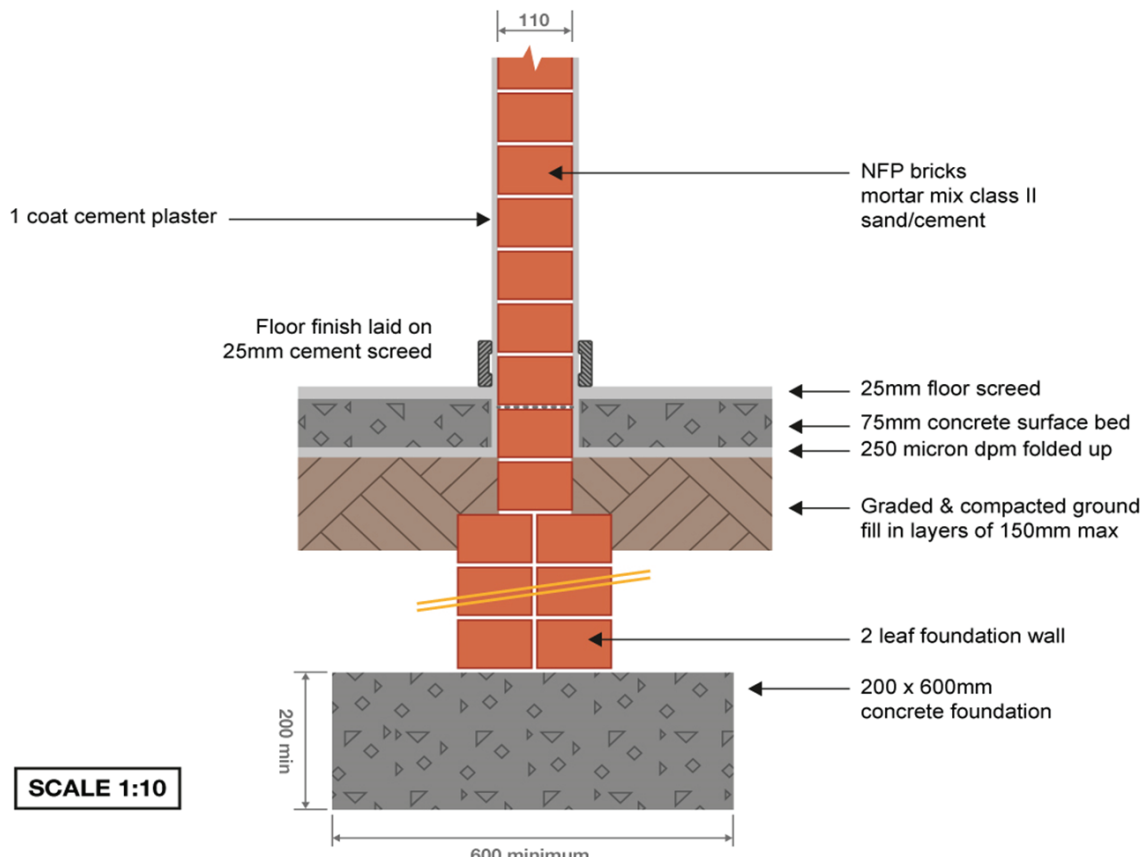
CHAPTER 7

CONSTRUCTION DETAILS

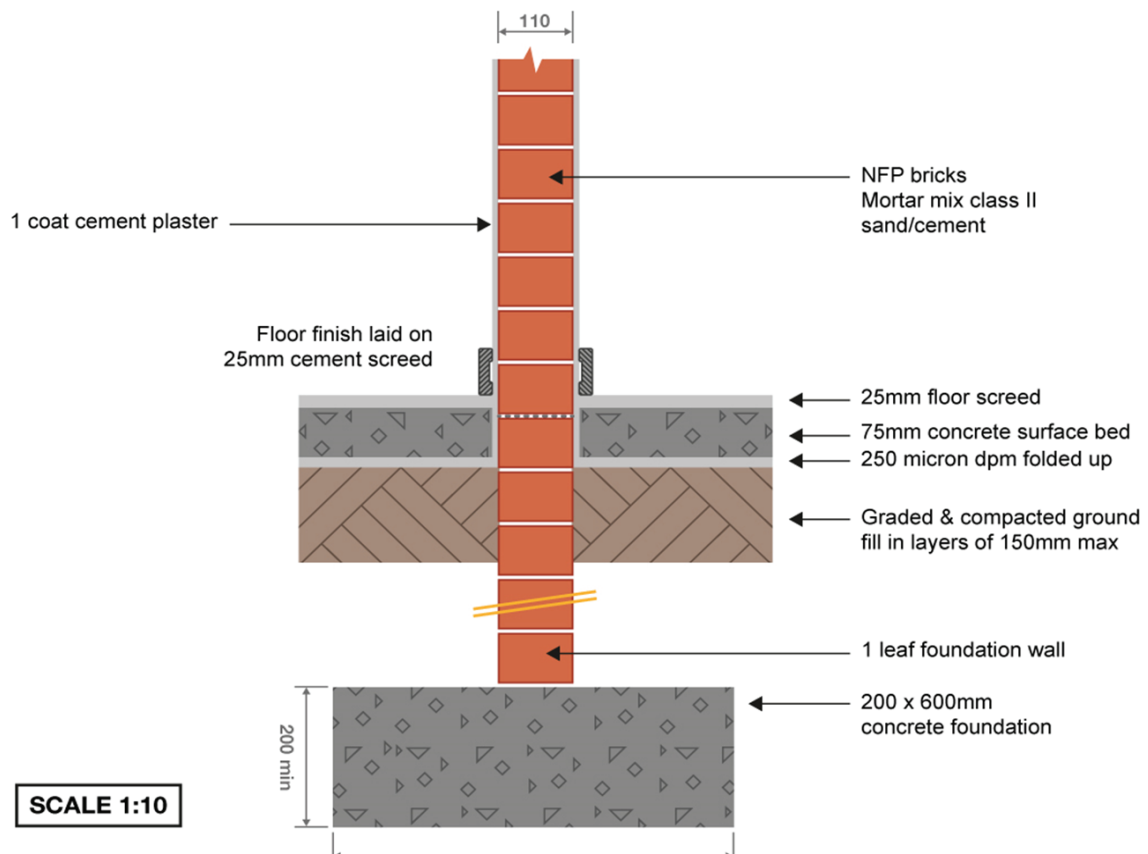




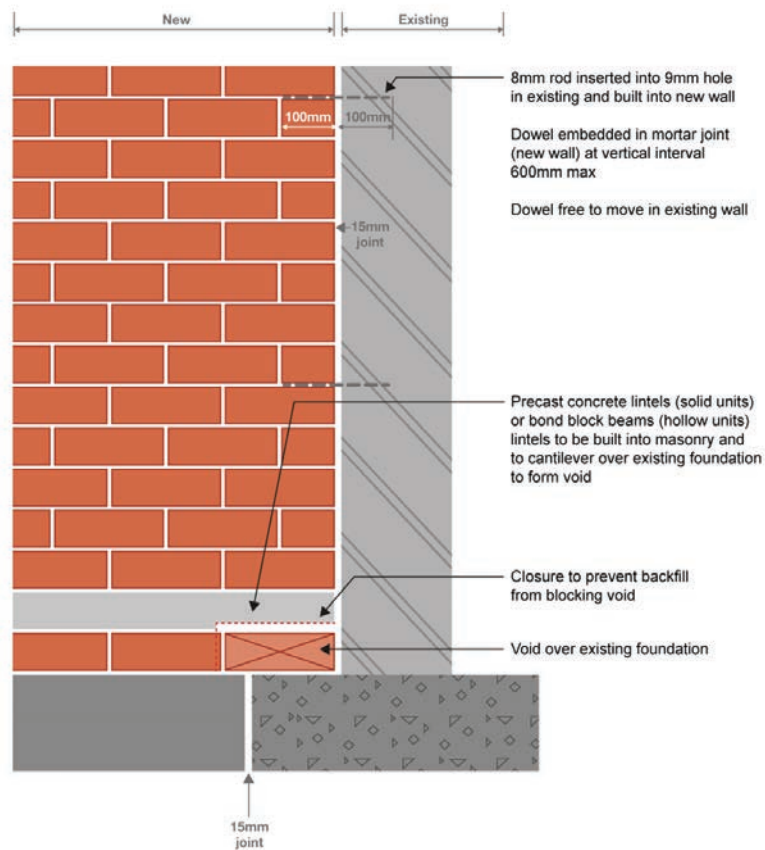
7.2 - External facebrick solid wall and surface bed junction



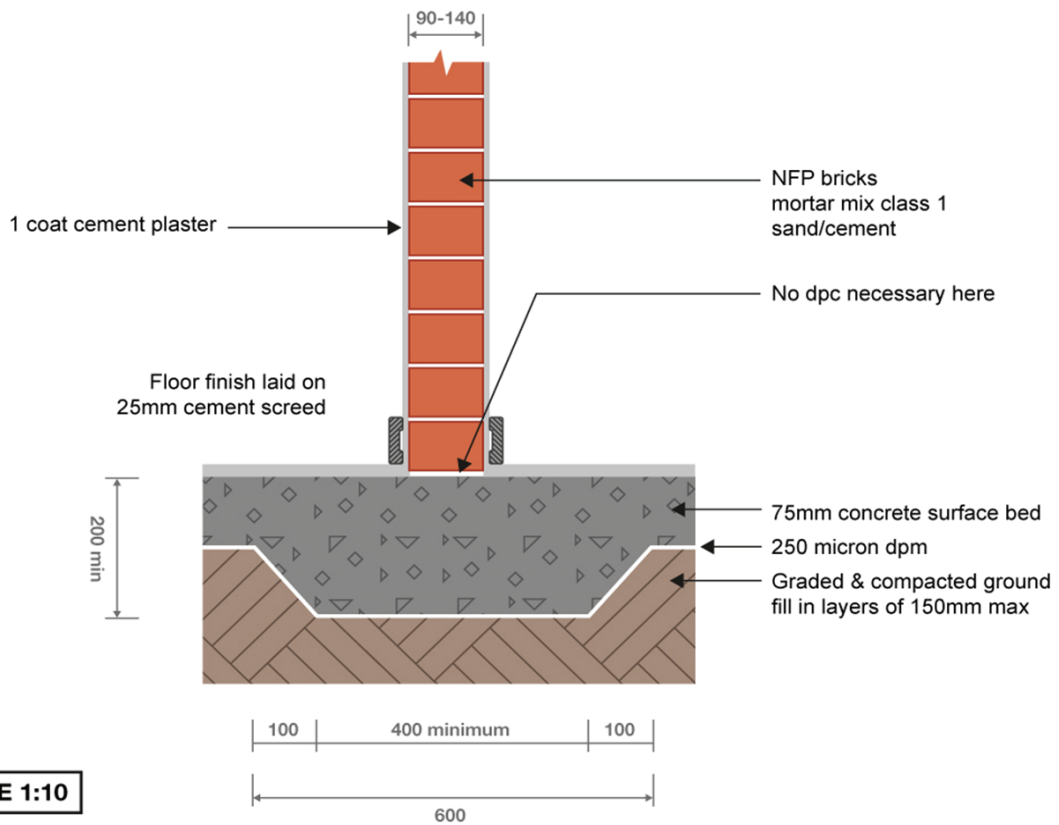
7.3 - Internal footing (75mm - 1000mm in height)



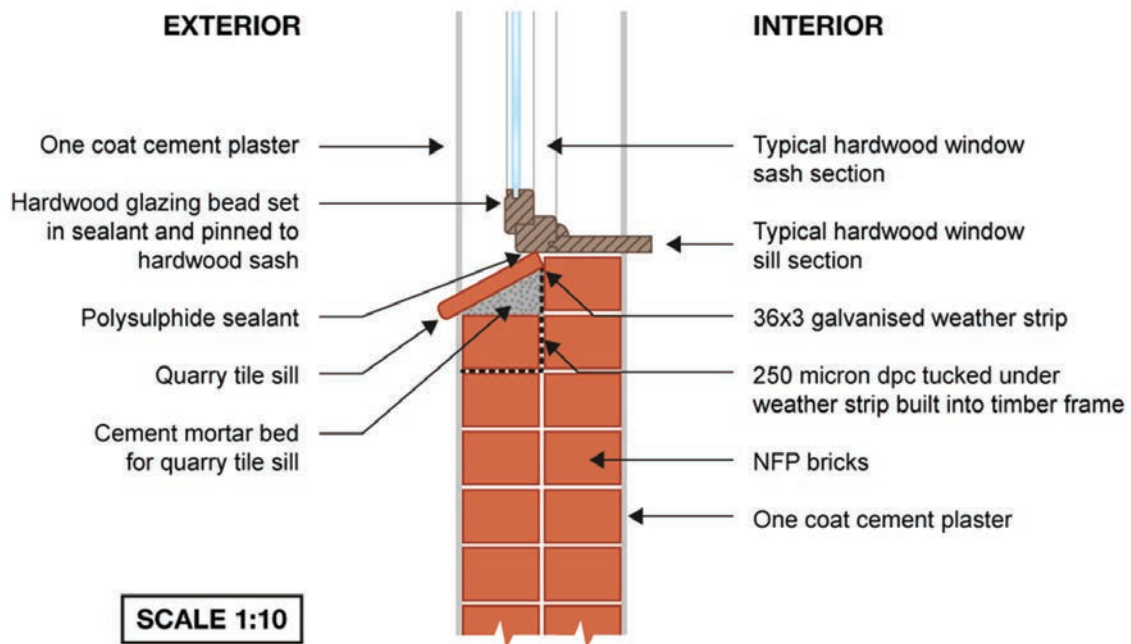
7.4 - Internal footing (300mm in height)



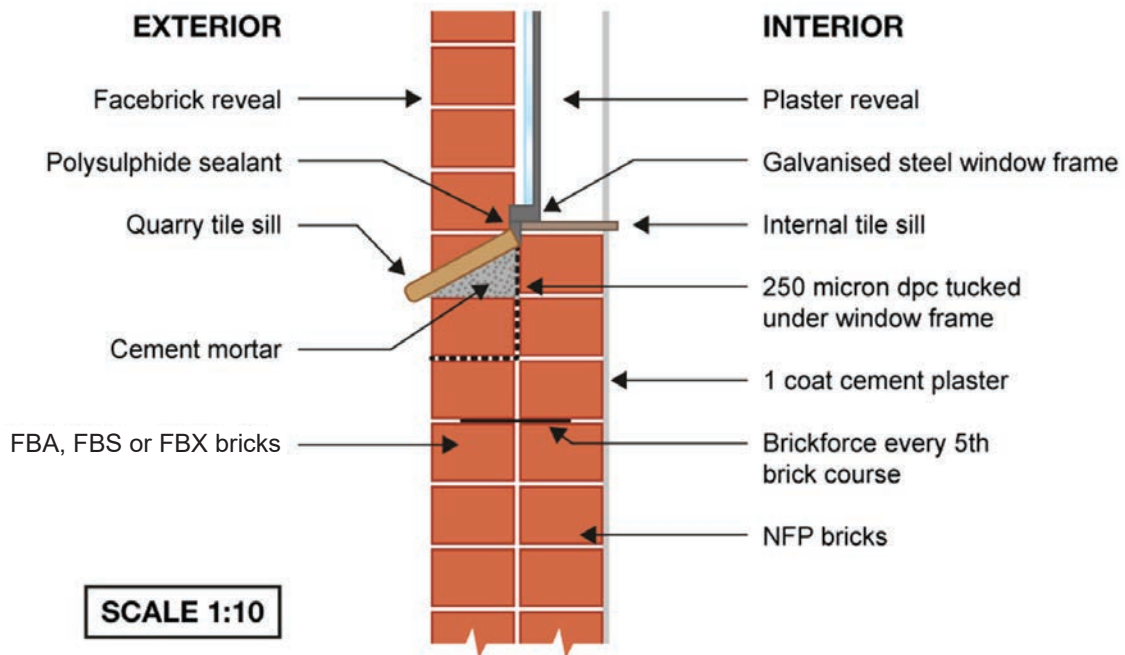
7.5 - New wall joined to an existing wall



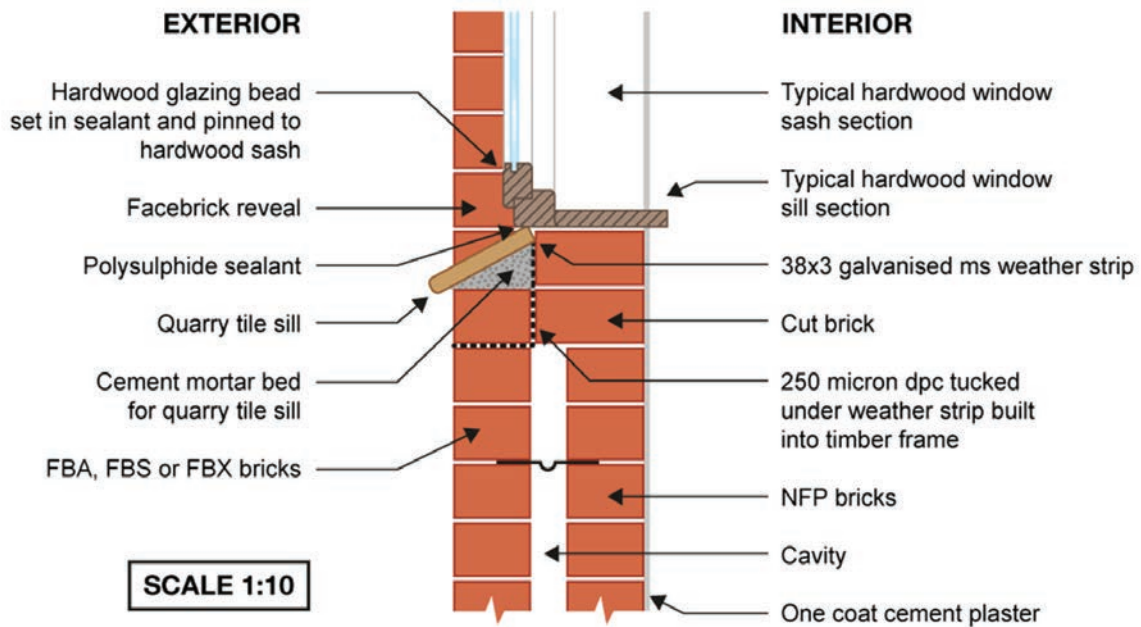
7.6 - Internal footing (thickened surface bed foundation)



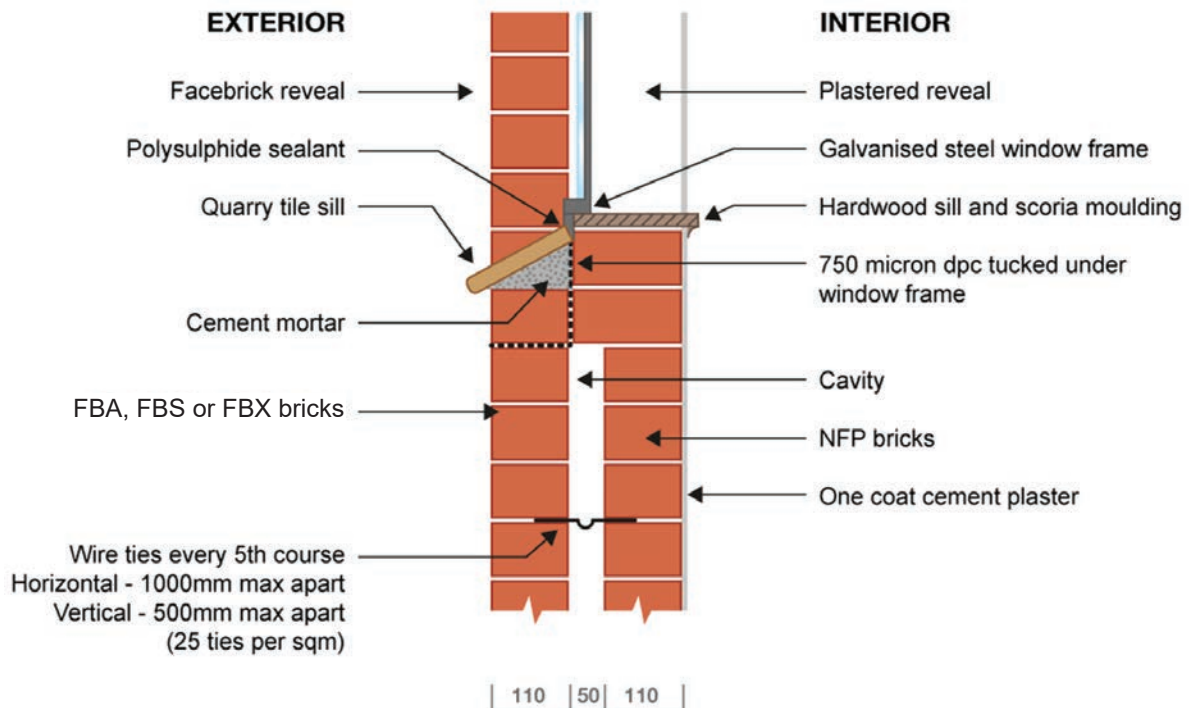
7.7 - Typical detail of a hardwood window (sill level in a brick wall)



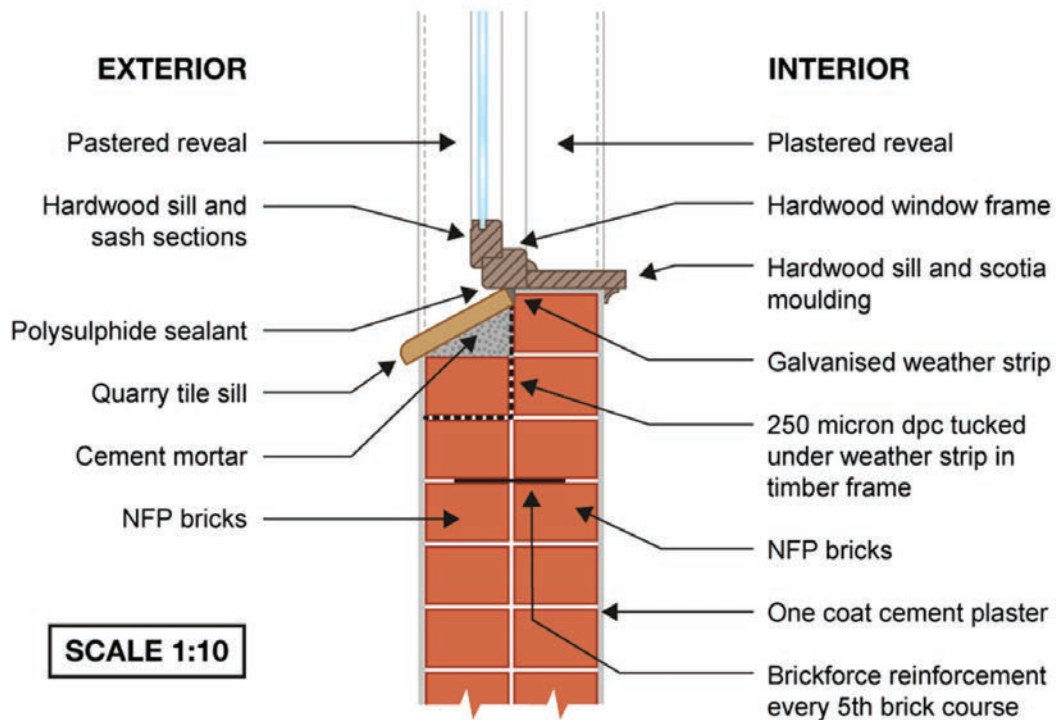
7.8 - Facebrick externally with quarry tile sill for brick wall



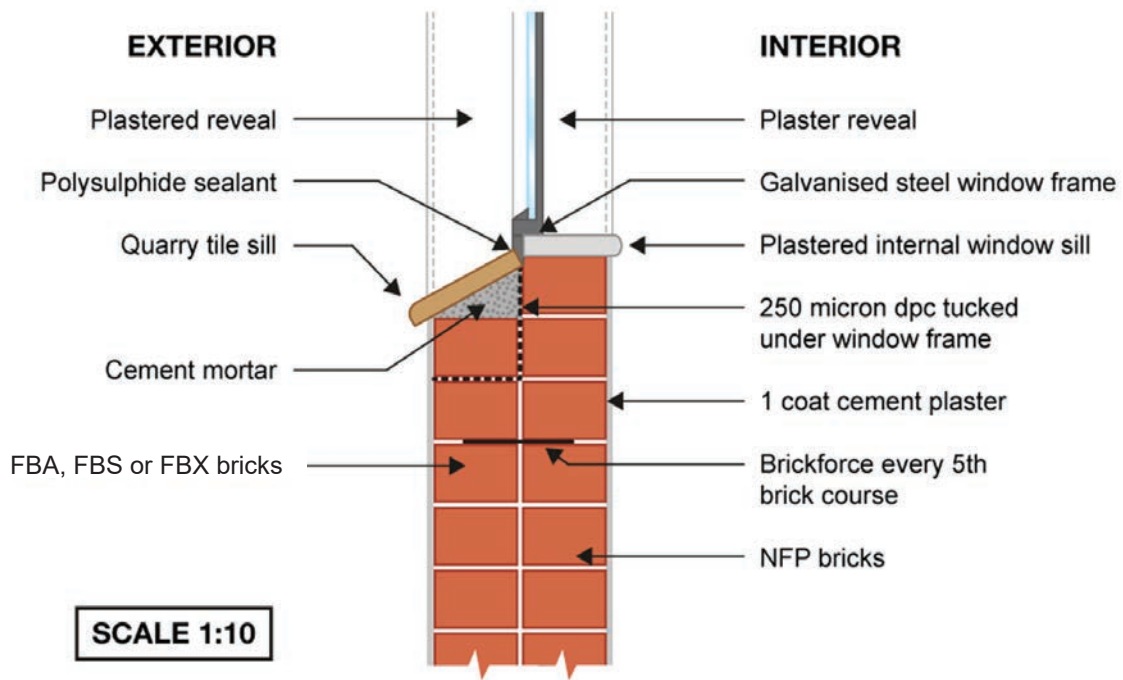
7.9 - Facebrick externally with timber window frame and quarry tile sill for cavity wall



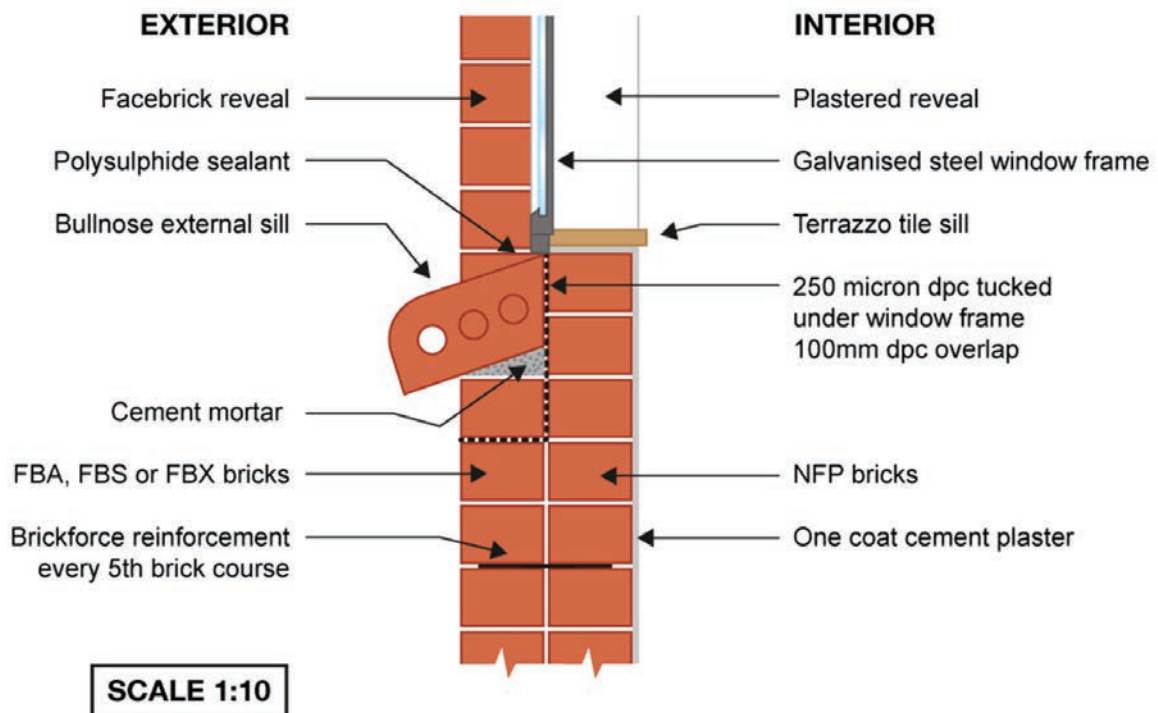
7.10 - Facebrick externally steel window frame and quarry tile sill for cavity wall



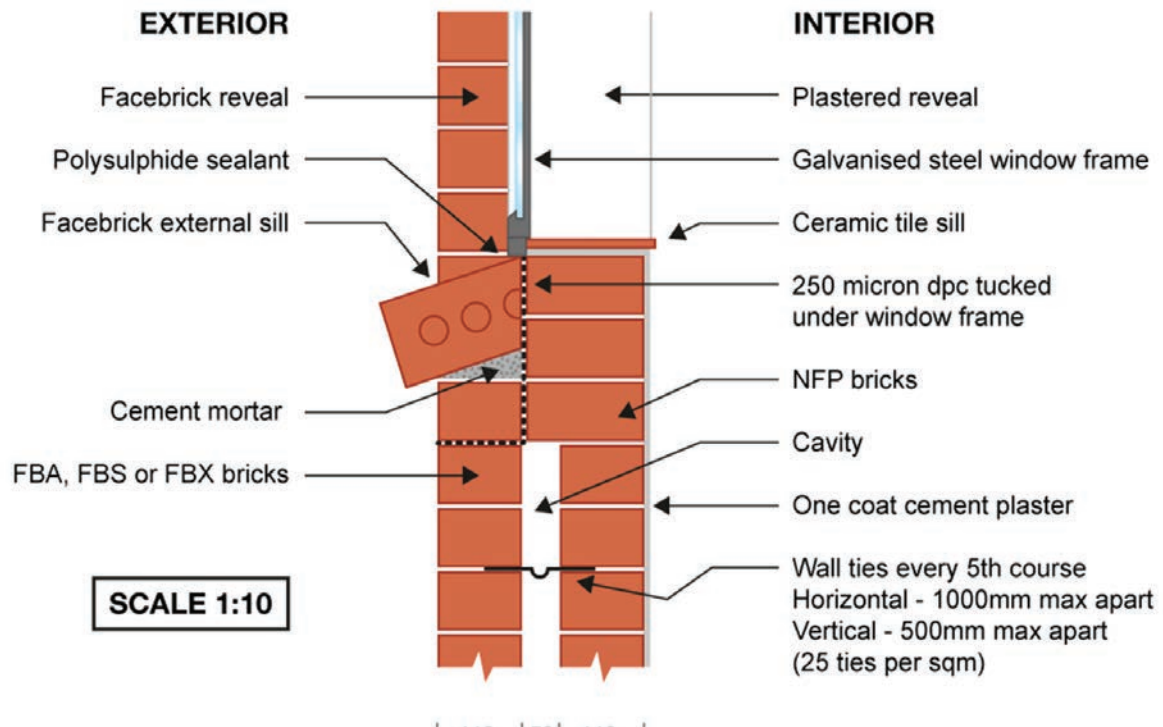
7.11 - External brick wall with quarry tile window sill (hardwood window)



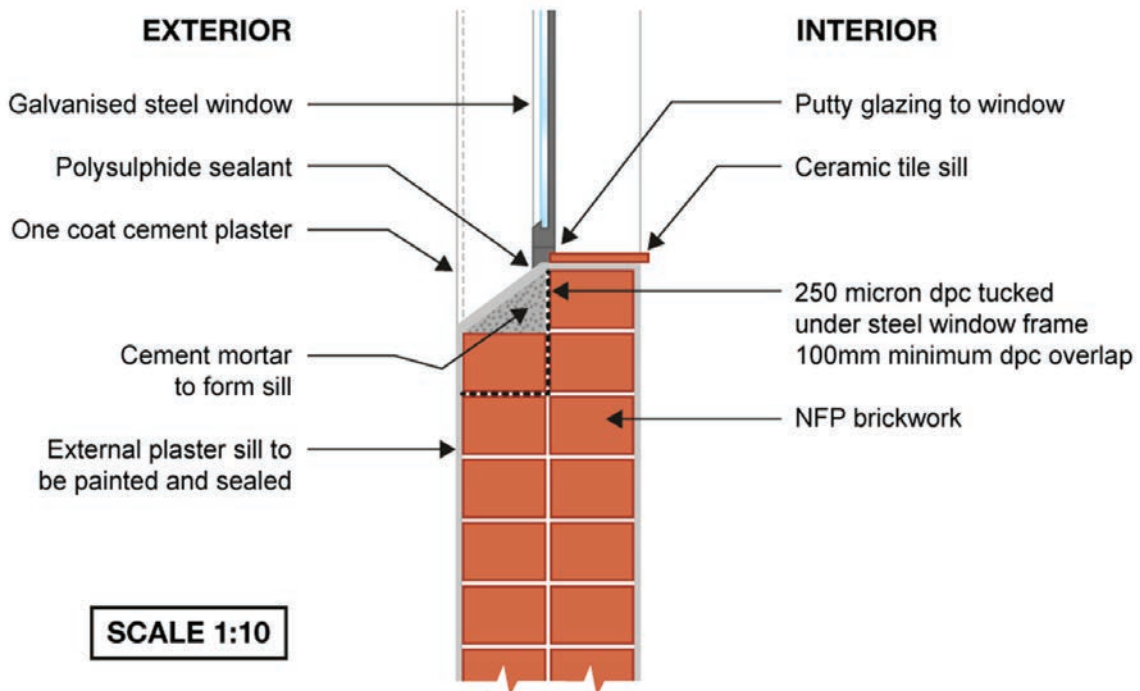
7.12 - External facebrick wall with quarry tile window sill (steel window)



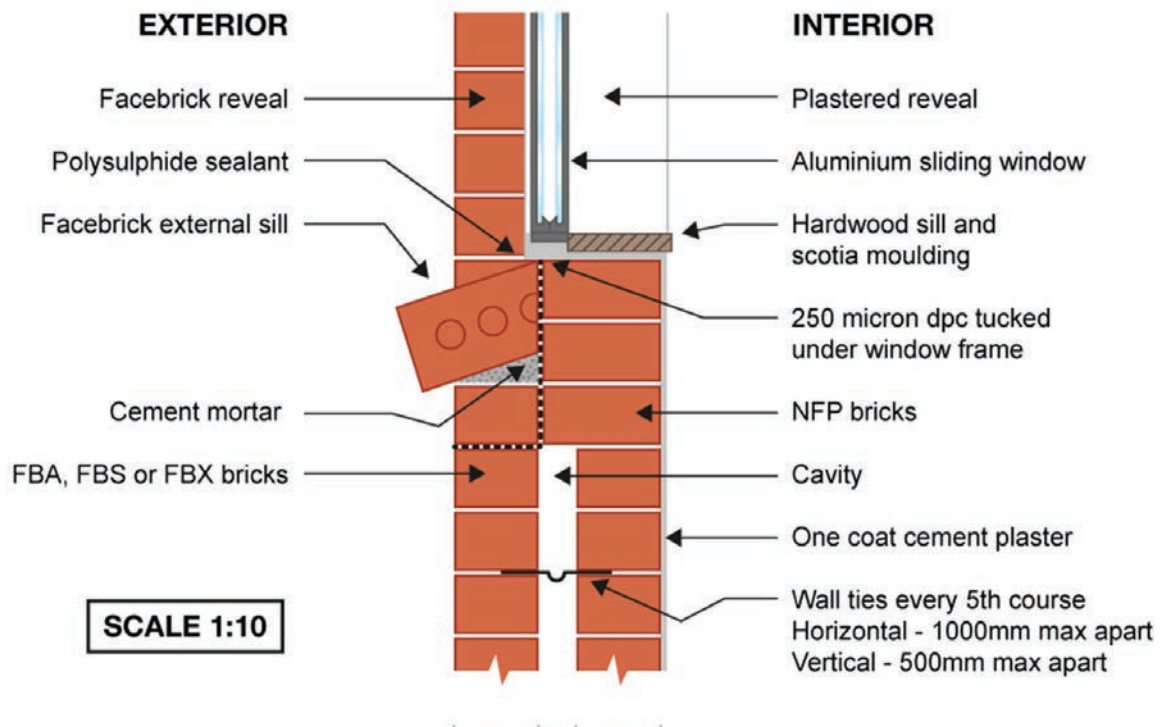
7.13 - Facebrick with bullnose sill externally for brick wall (steel window)



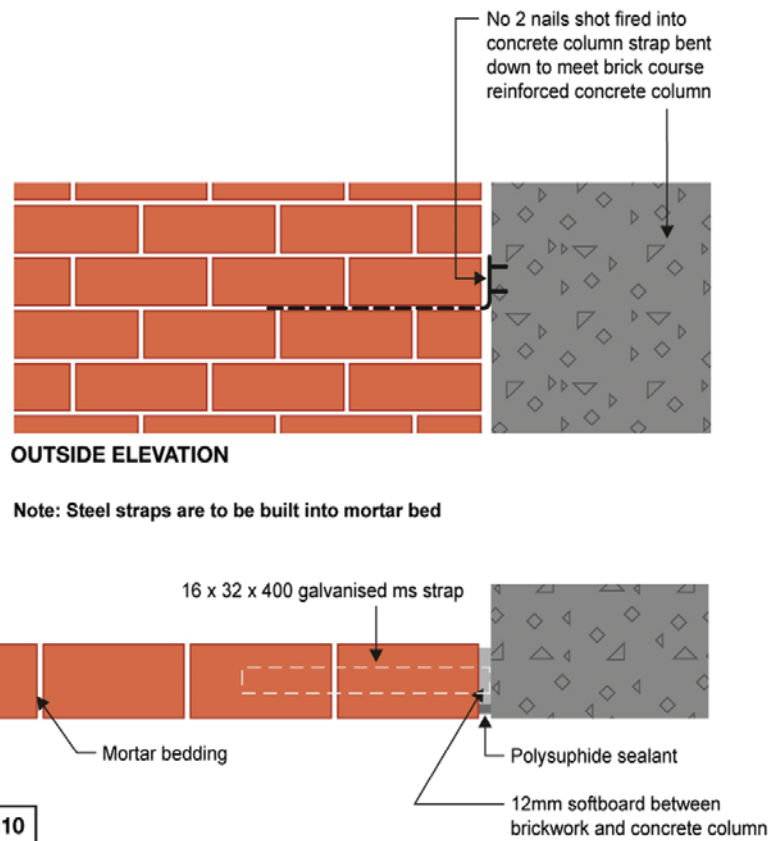
7.14 - Facebrick with bullnose sill externally for cavity wall (steel window)



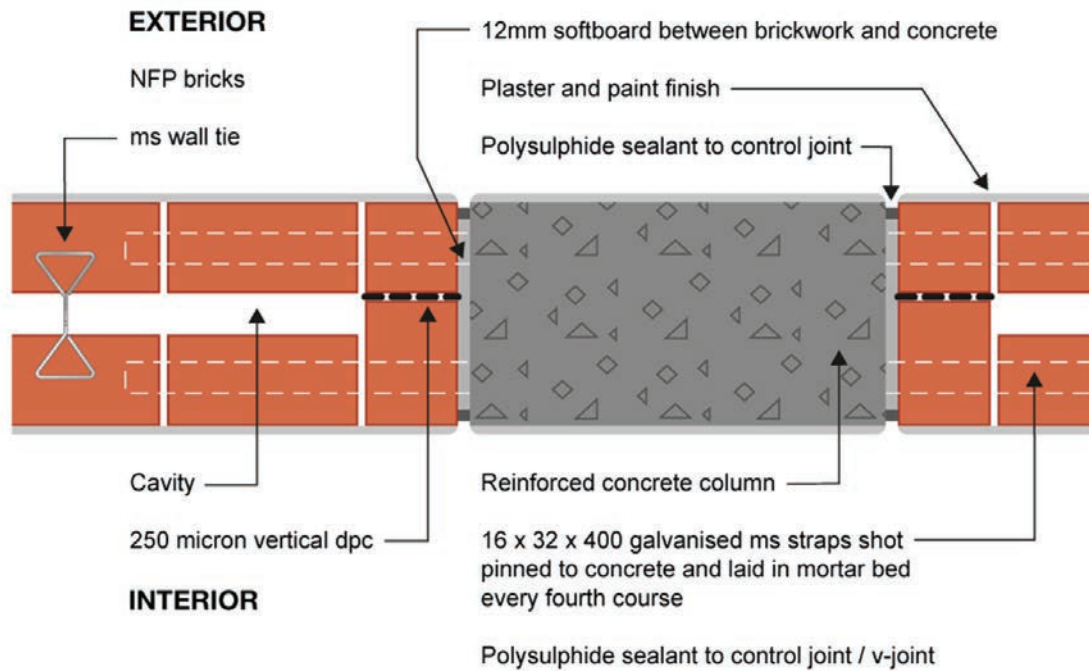
7.15 - Steel window with plaster external sill in brick wall



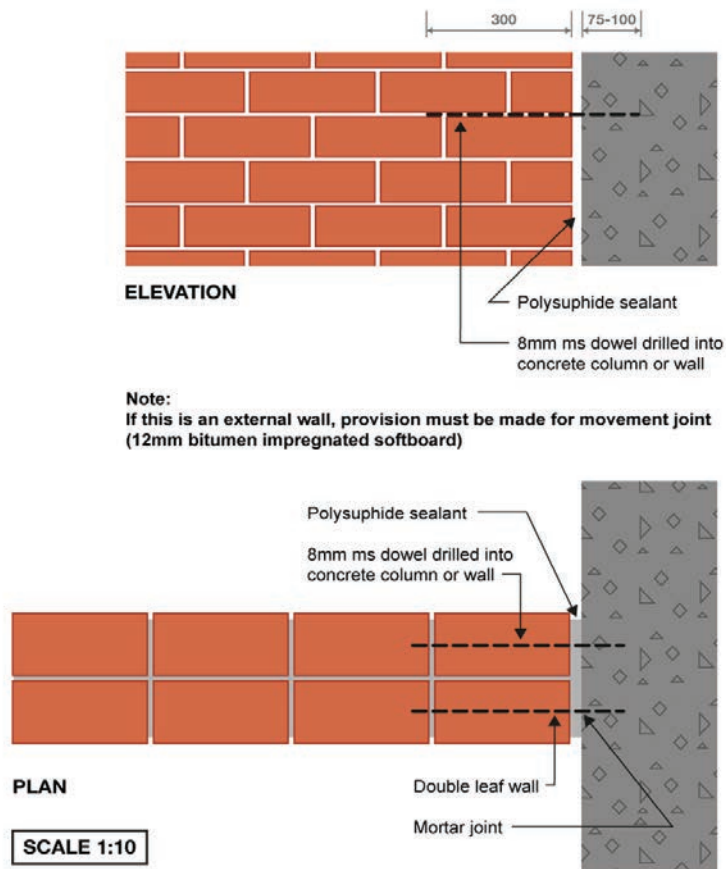
7.16 - Facebrick with brick sill externally for cavity wall Sliding aluminium window



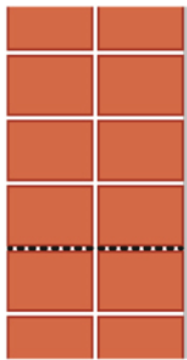
7.17 - External cavity wall construction at junction with R.C. balcony slab



7.18 - Typical R.C column / brick cavity wall junction with vertical joints

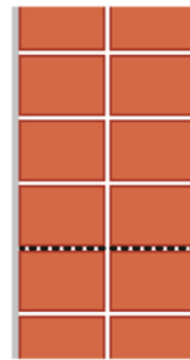


7.19 - Section of brick wall joined to concrete column



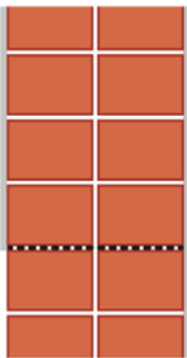
FBS, FBX or FBA bricks
 DPC must project to face of facebrick
 DPC to be laid directly on brickwork

INCORRECT



Plaster NFP bricks
 DPC must project to face of facebrick
 Crack will develop in line with DPC

INCORRECT



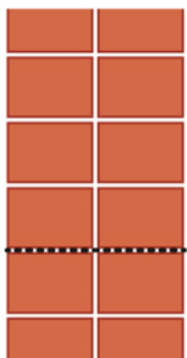
Plaster NFP bricks
 DPC should not project to face of plaster
 FBA, FBS or FBX bricks

INCORRECT



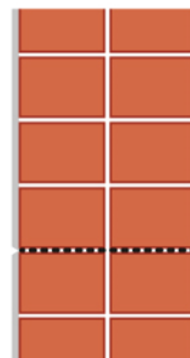
Plaster
 Plaster drip NFP bricks
 DPC to end flush with brickwork face
 DPC to be laid directly on brickwork
 FBA, FBS or FBX bricks

INCORRECT



FBS, FBX or FBA bricks
 DPC must project to face of facebrick
 DPC must be sandwiched between 2 layers of mortar

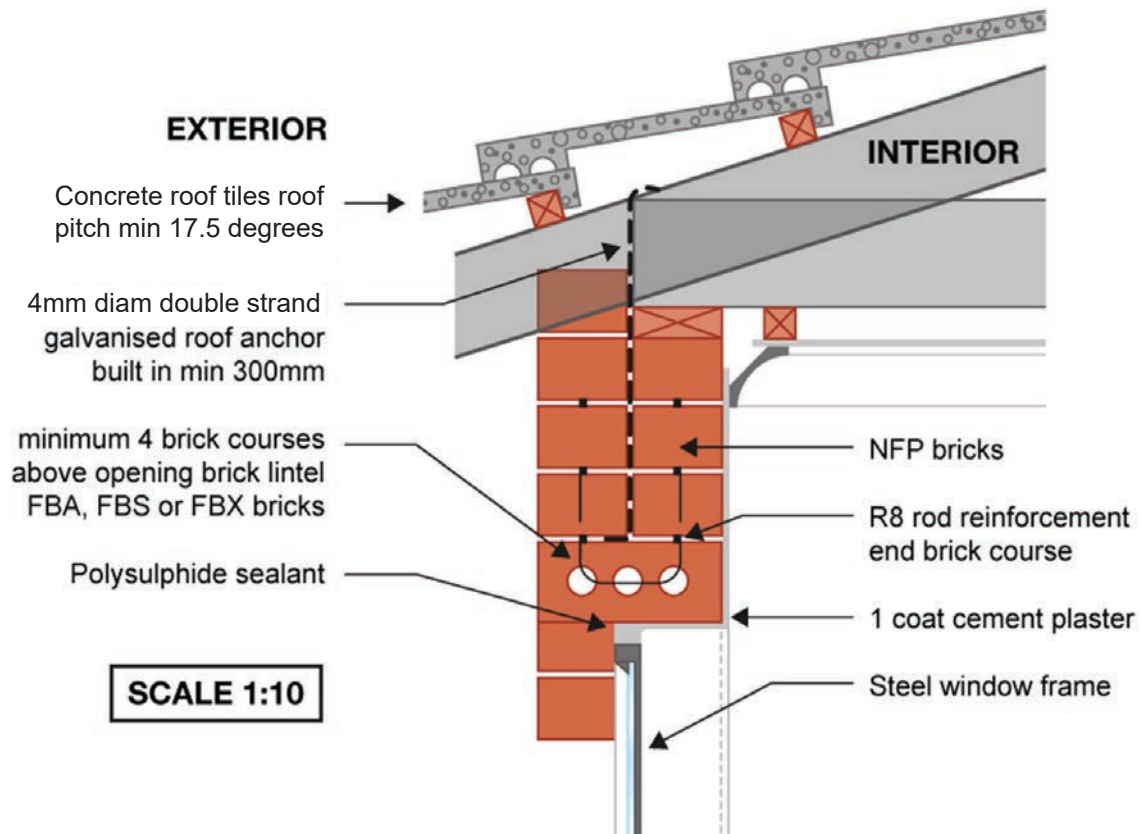
CORRECT



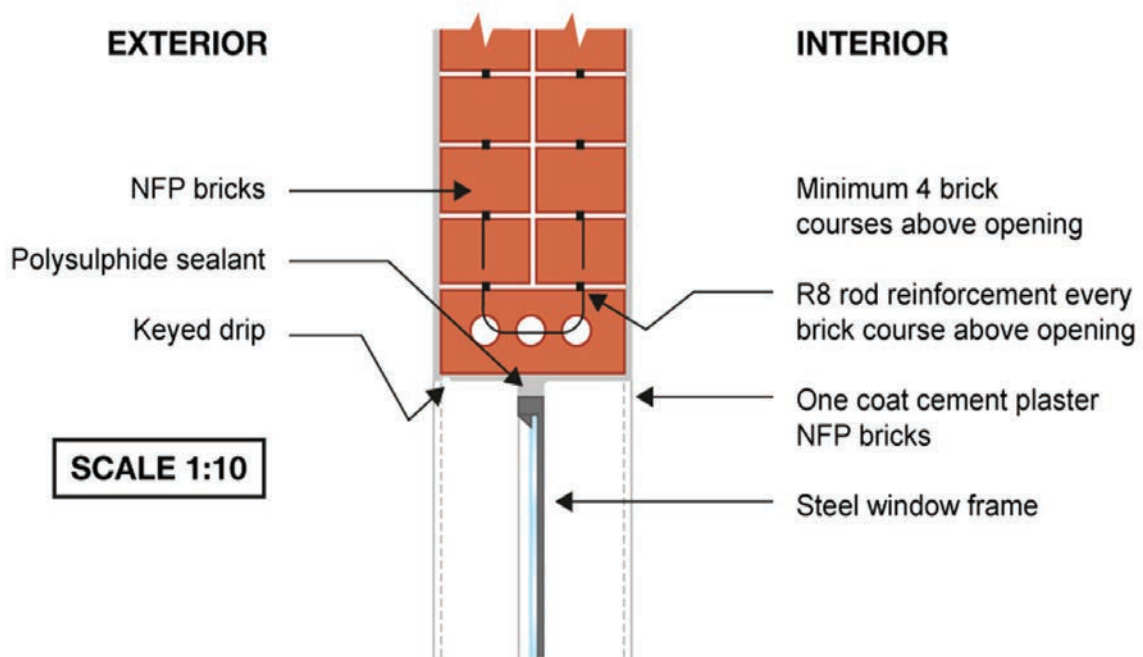
Plaster NFP bricks
 Horizontal v-joint in plaster (no sealant needed)

CORRECT

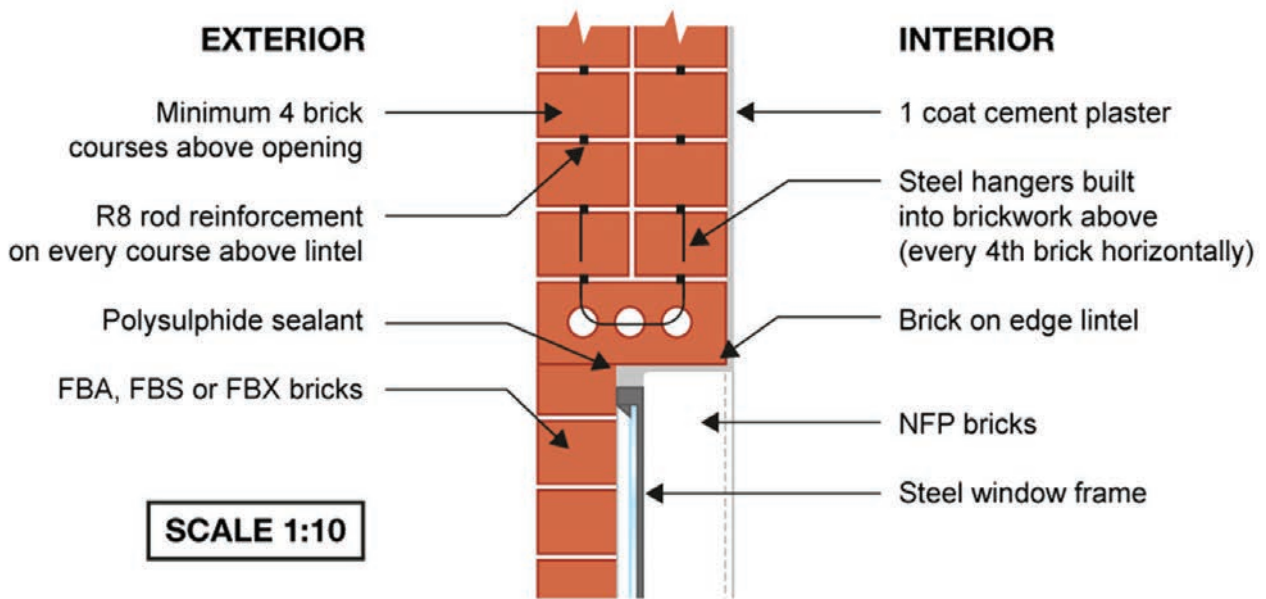
SCALE 1:10



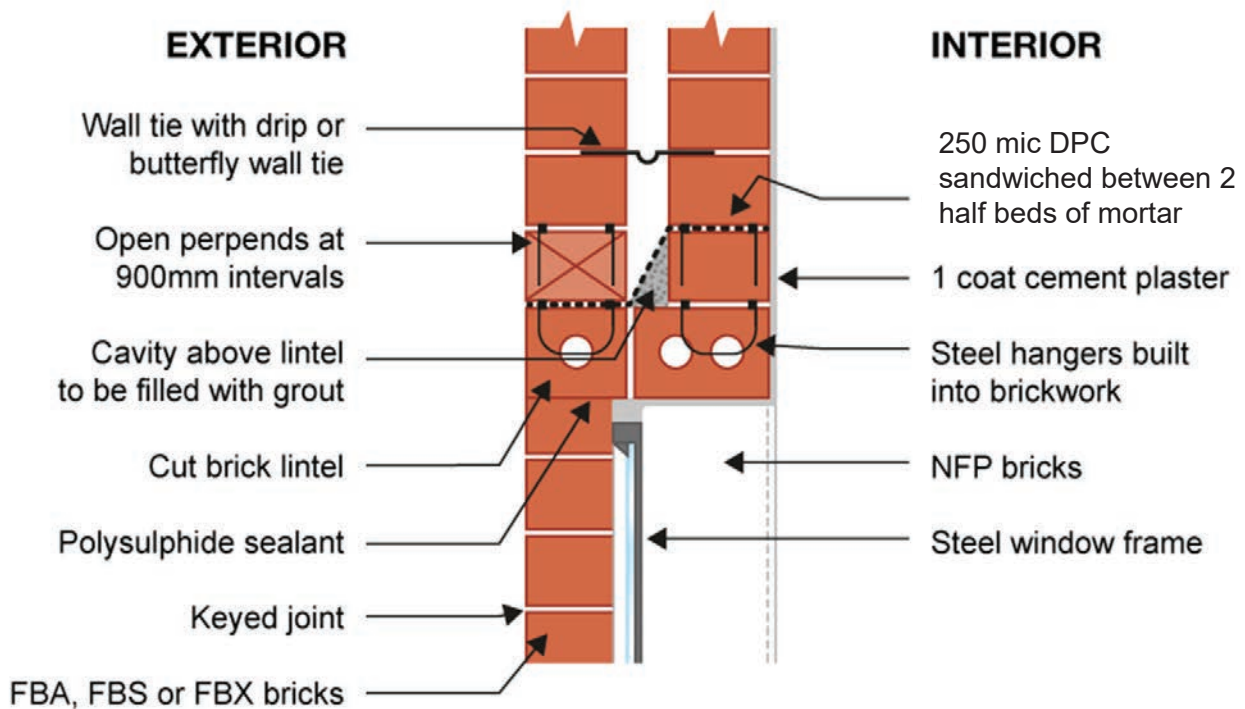
7.21 - Brick lintel for facebrick external wall (steel window)



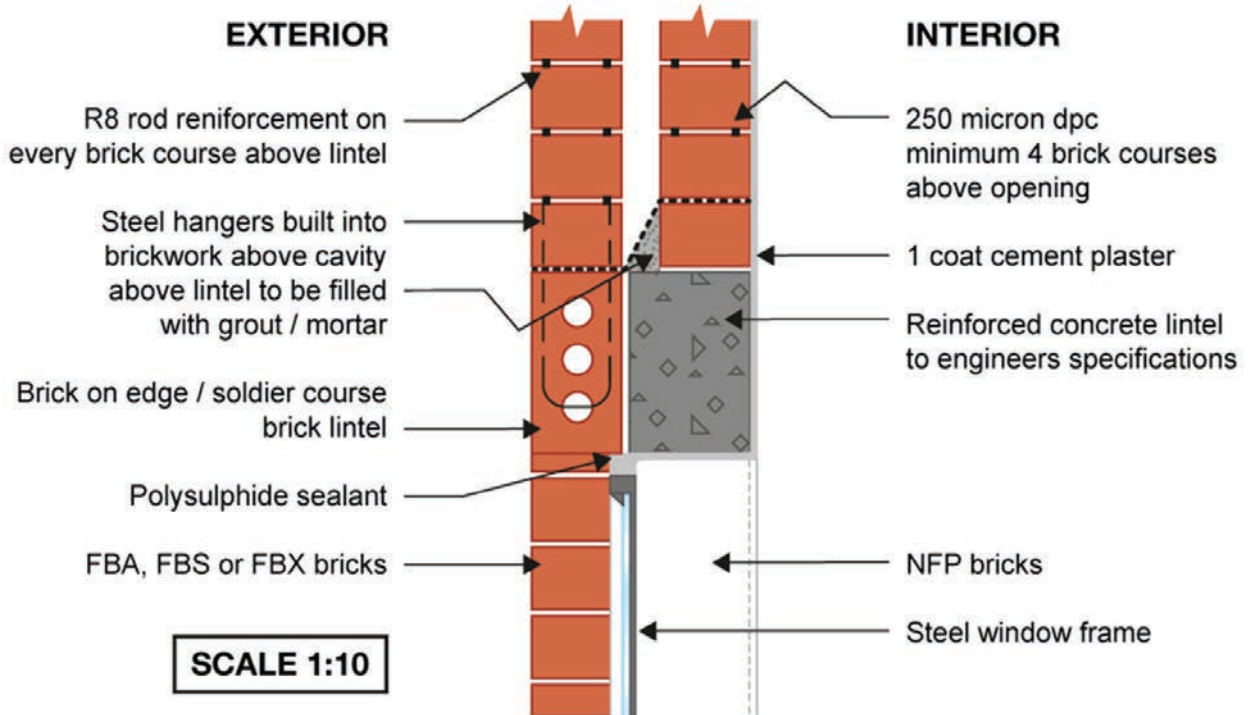
7.22 - Brick lintel for an external plaster finished brick wall



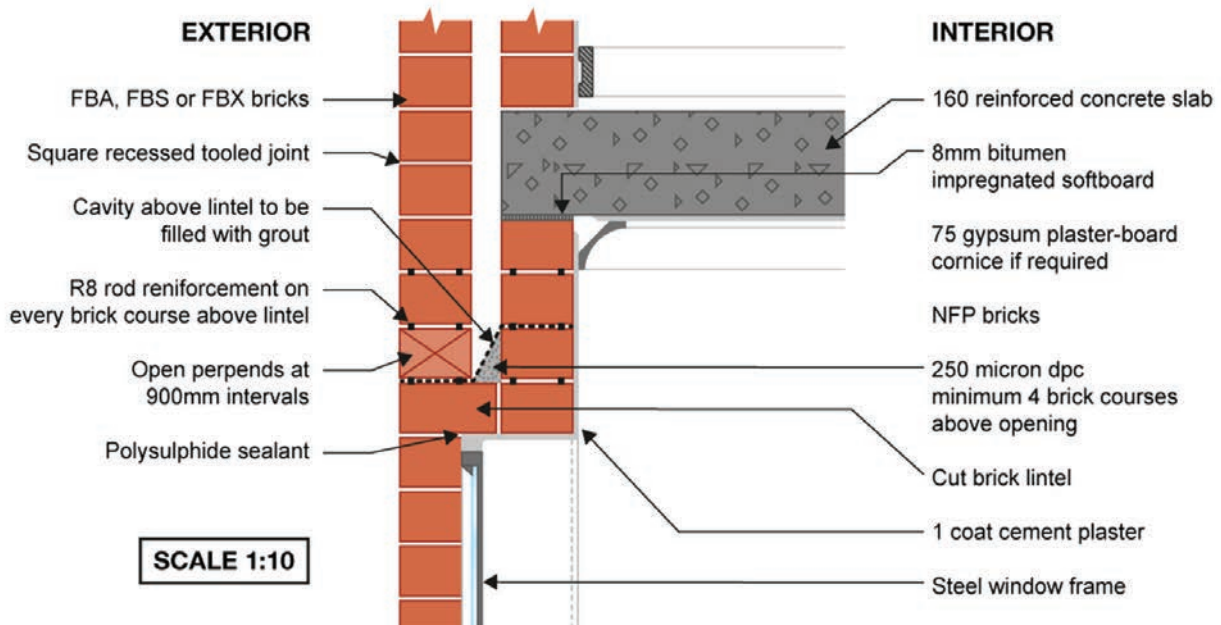
7.23 - Brick lintel for an external facebrick wall



7.24 - Brick lintel for an external cavity wall

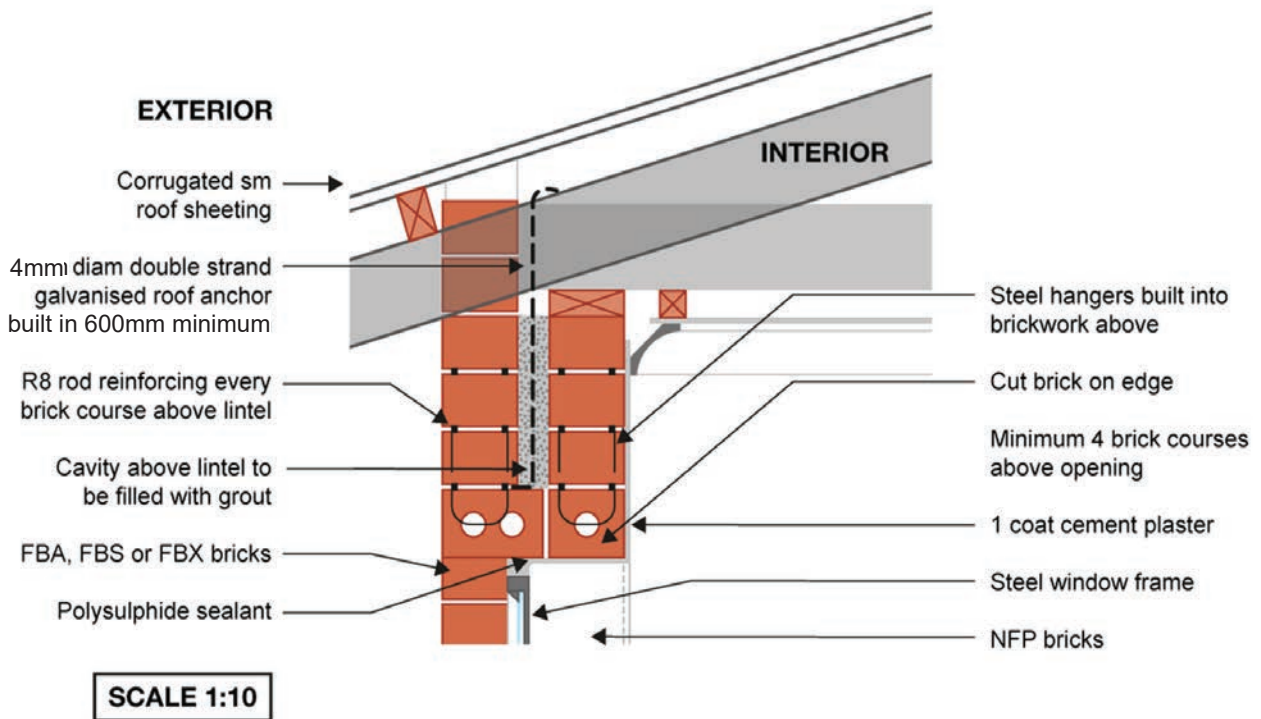


7.25 - Brick on edge (soldier course) lintel for cavity wall

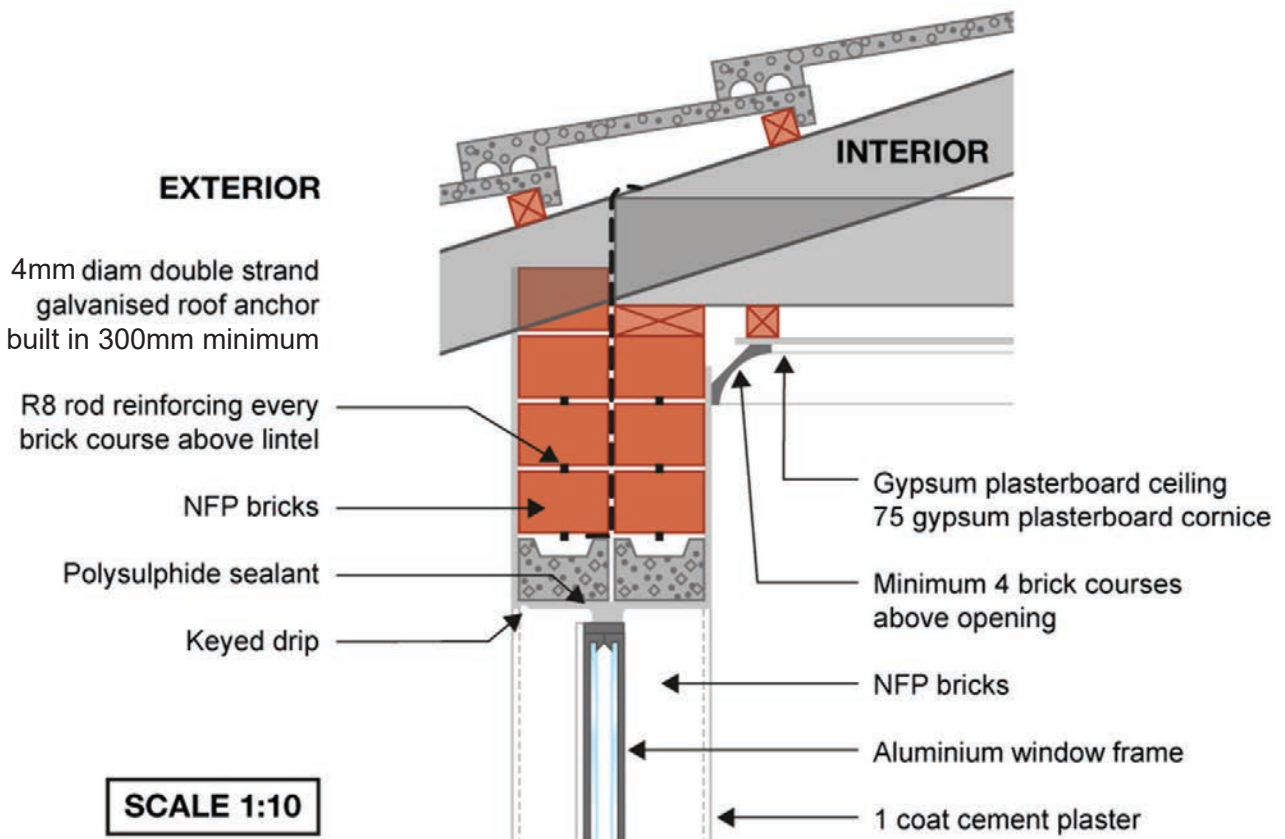


Note: This detail is suitable for a multi-story building where there is no protection from rain to the area above the window

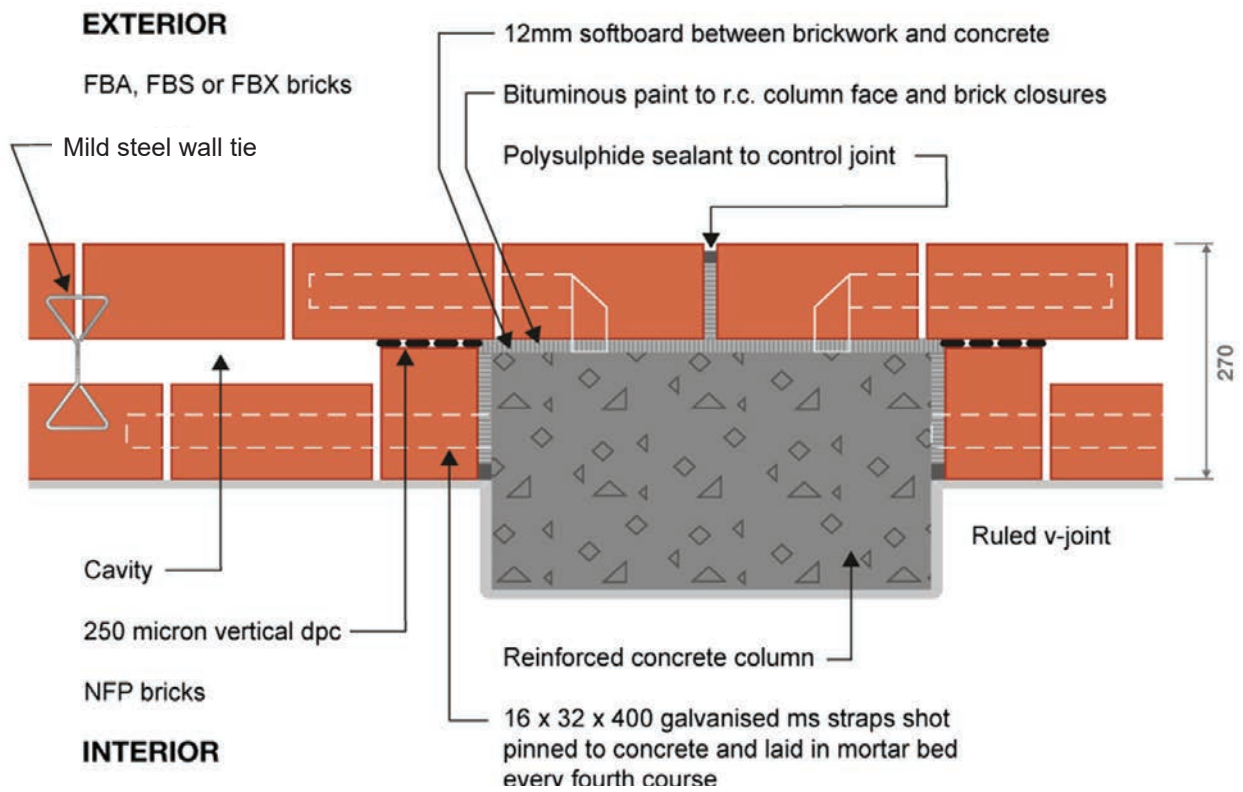
7.26 - Brick lintel for facebrick external wall (steel window)



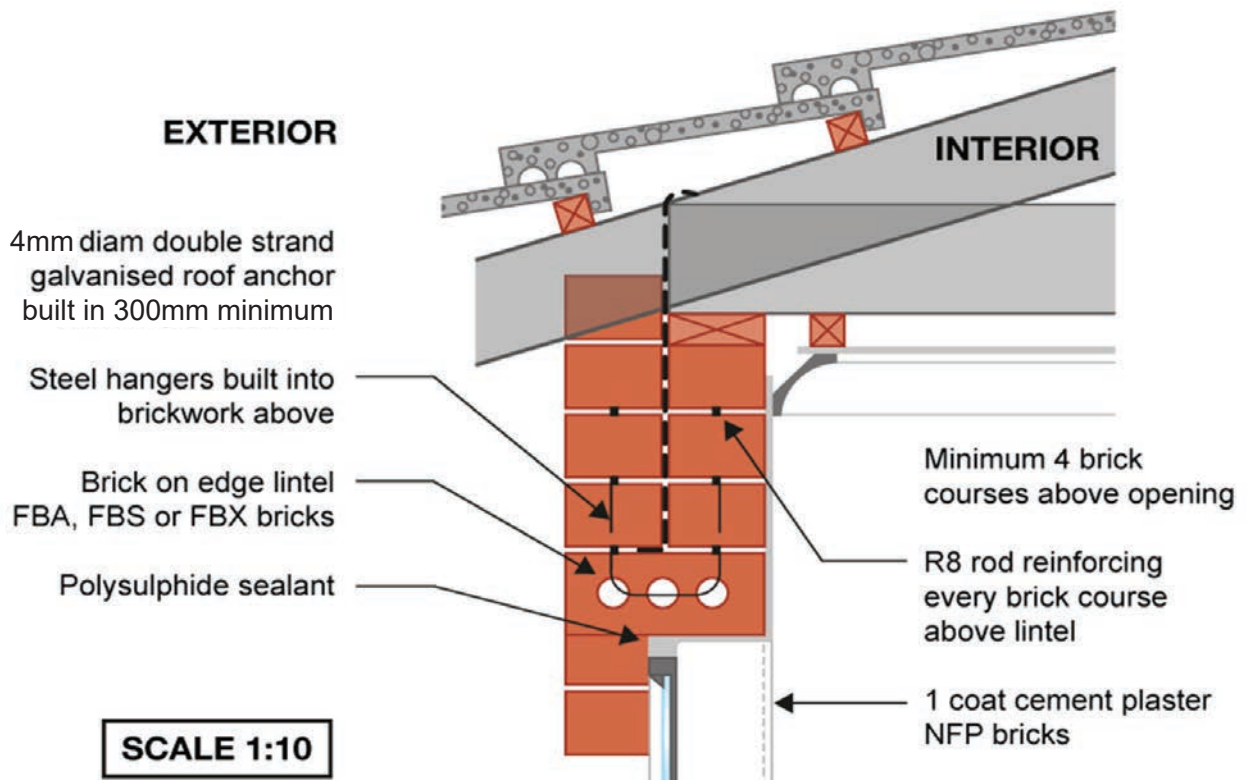
7.27 - Brick lintel for facebrick external wall (steel window)



7.28 - Double precast concrete lintel for plastered external brick wall (aluminium window)



7.29 - Typical R.C. column / brick cavity wall junction with vertical joints



7.30 - Brick on edge lintel for facebrick external wall (steel window)

